

Demonstrative Adjectives

There are four demonstrative adjectives in English. A demonstrative adjective is **immediately before a noun** in an English sentence and is it used to **draw attention to the noun** in the sentence.

You can touch it (here)

It is a far distance (there)

Singular noun
Uncountable noun

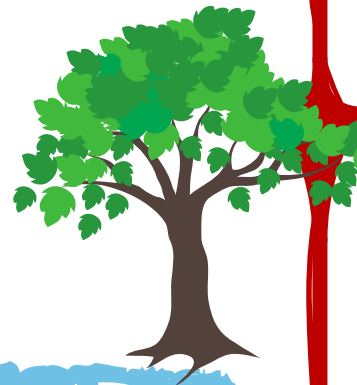
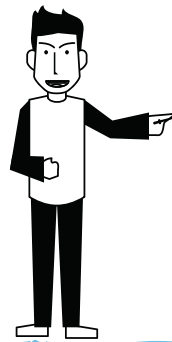
THIS

Look at this tree!



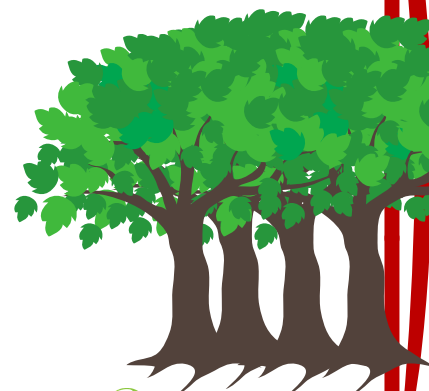
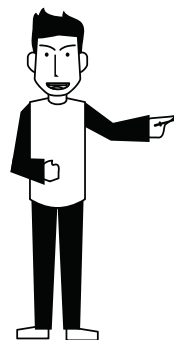
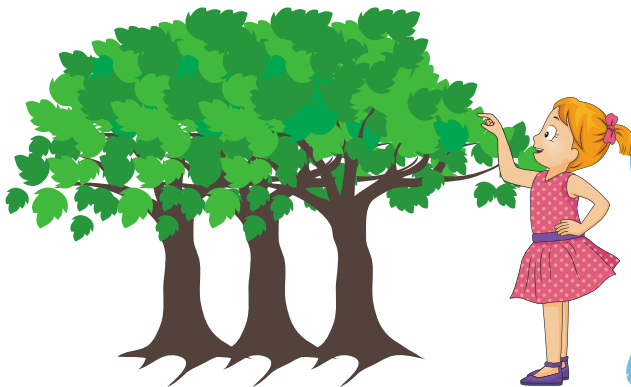
THAT

Look at that tree!



THESE

Look at these trees!



Plural noun

THOSE

Look at those trees!