



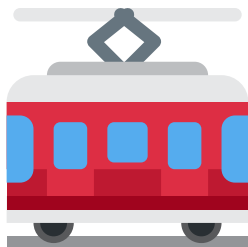
Get in the **car**!



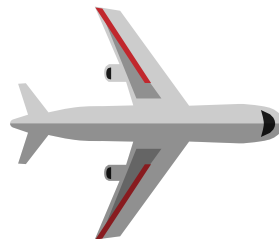
Get in the **taxi**!

"To get in" is used to say "enter" a small means of public transport.

in



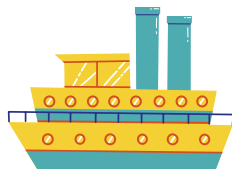
Get on the **tram**!



Get on the **plane**!



Get on the **tube**!



Get on the **boat**!



Get on the **train**!



Get on the **bus**!

"To get on" is used to say "enter" general means of public transport that transport numerous people.

on

get

out

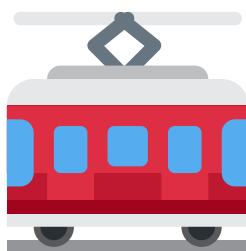
"To get out" is used to say "exit" a small means of public transport. This is the opposite to "get in". You usually need an additional preposition "of" after this verb to.



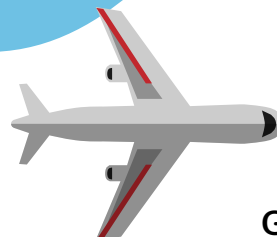
Get out of the **car**!



Get out of the **taxi**!



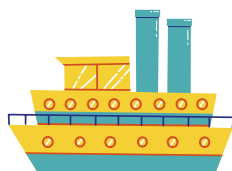
Get off the **tram**!



Get off the **plane**!



Get off the **tube**!



Get off the **boat**!



Get off the **train**!



Get off the **bus**!

"To get off" is used to say "exit" general means of public transport that transport numerous people.

off